



## **TOWNSHIP CENTER**

**607 South Gridley Street**

**Bloomington, IL 61701**

**(309)828-2356**

**(309)823-4224**



**We are known as...**

**Town of the City of Bloomington Township**

**City of Bloomington Township**

**Bloomington City Township**

**Township**

**(not Bloomington Township)**

# **Township**

**Our Township is coterminous.**

**The boundaries of our Township are the same as the City of Bloomington. We are one of 19 coterminous townships in Illinois.**

**We are also considered an 'urban' township.**

# **Township Annual Town Meeting**

**The City of Bloomington Alderman are also the Trustees of the City of Bloomington Township.**

**At this meeting, the Township Clerk is the ONLY individual acting in any official capacity. Everyone else present regardless if they are an elected official or not are here as electors (voters) and each have an equal vote in each matter voted upon.**

## **LOCAL GOVERNMENT**

**County - Judicial**

**City - Public Works & Public Safety**

**Township - Local Human Services,  
Property Assessment, and  
Evergreen Memorial Cemetery**

**Our local governments do not duplicate services. We collaborate readily through Intergovernmental Agreements whenever possible.**

**TOWNSHIP BOARD OF TRUSTEES - The legislative branch of township government. Trustees certify tax levies, adopt the annual town budget and appropriation ordinance, and the general assistance budget. Trustees are responsible for approving all township expenses.**

**Tari Renner  
Jamie Mathy  
David Sage  
Mboka Mwilambwe  
Amelia Buragas  
Joni Painter  
Karen Schmidt  
Scott Black  
Diana Hauman  
Kimberly Bray**

**TOWNSHIP CLERK** – The Township Clerk maintains all township records except for active general assistance cases. The clerk is required to keep accurate records of all township board meetings and maintain records of the board’s executive sessions.

**TOWNSHIP ASSESSOR** – The Township Assessor is the only elected position that has statutory, pre-election requirements. The assessor’s responsibilities include the appraisal of all taxable property within the township assessment district. The assessor needs to remain as an independent elected official to maintain an unbiased and objective assessment of property.

**TOWNSHIP SUPERVISOR** – The Township Supervisor serves as chief executive officer of the township. The supervisor’s duties and responsibilities include, but are not limited to, administrator of the general assistance program and treasurer of all town funds including general assistance and cemetery funds.

# Township

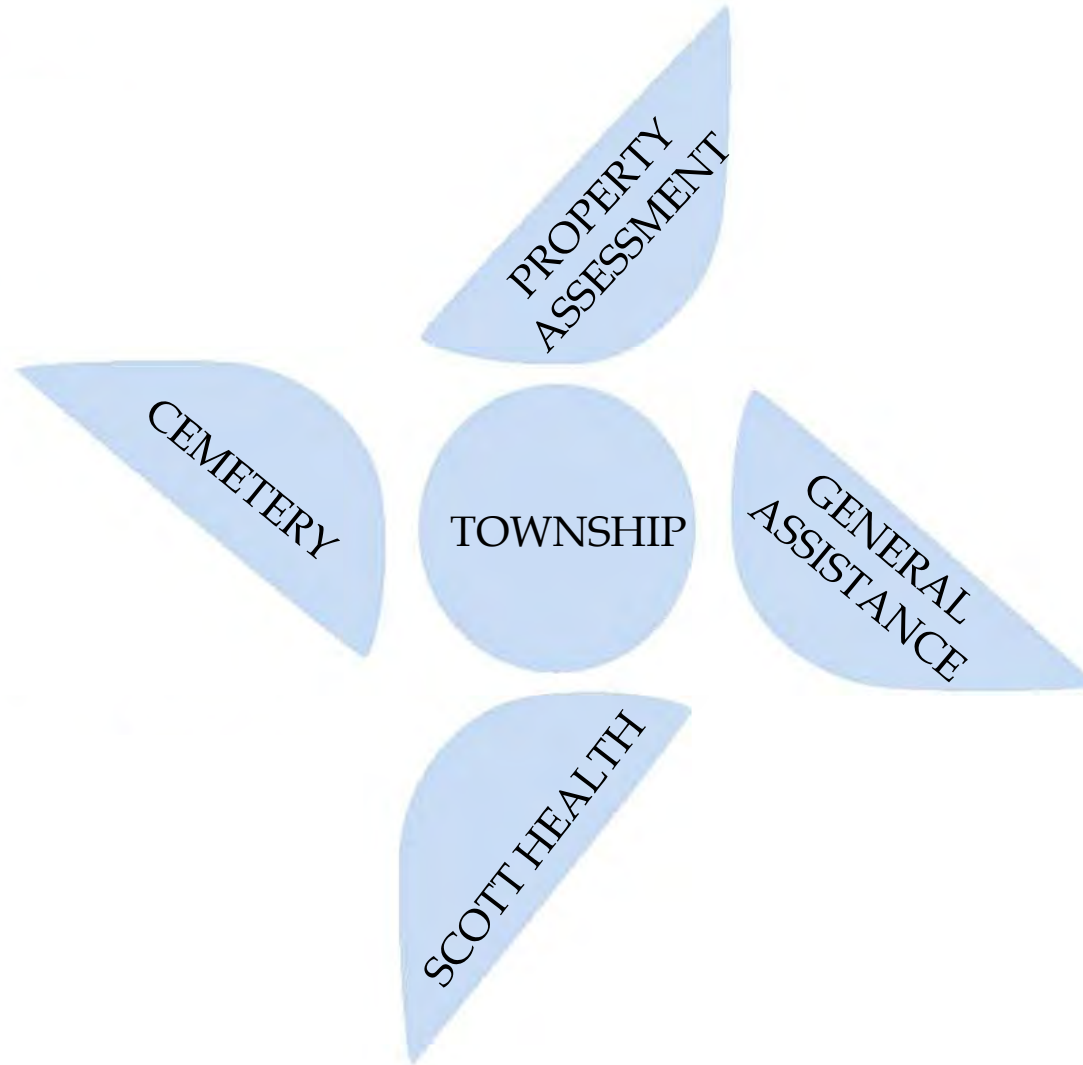
- ✓ **General Assistance**
- ✓ **Property Assessments**
- ✓ **General Town**
- ✓ **Evergreen Memorial Cemetery**
- ✓ **John M. Scott Health Resource Center**



***COBT***

City of Bloomington Township





PROPERTY  
ASSESSMENT

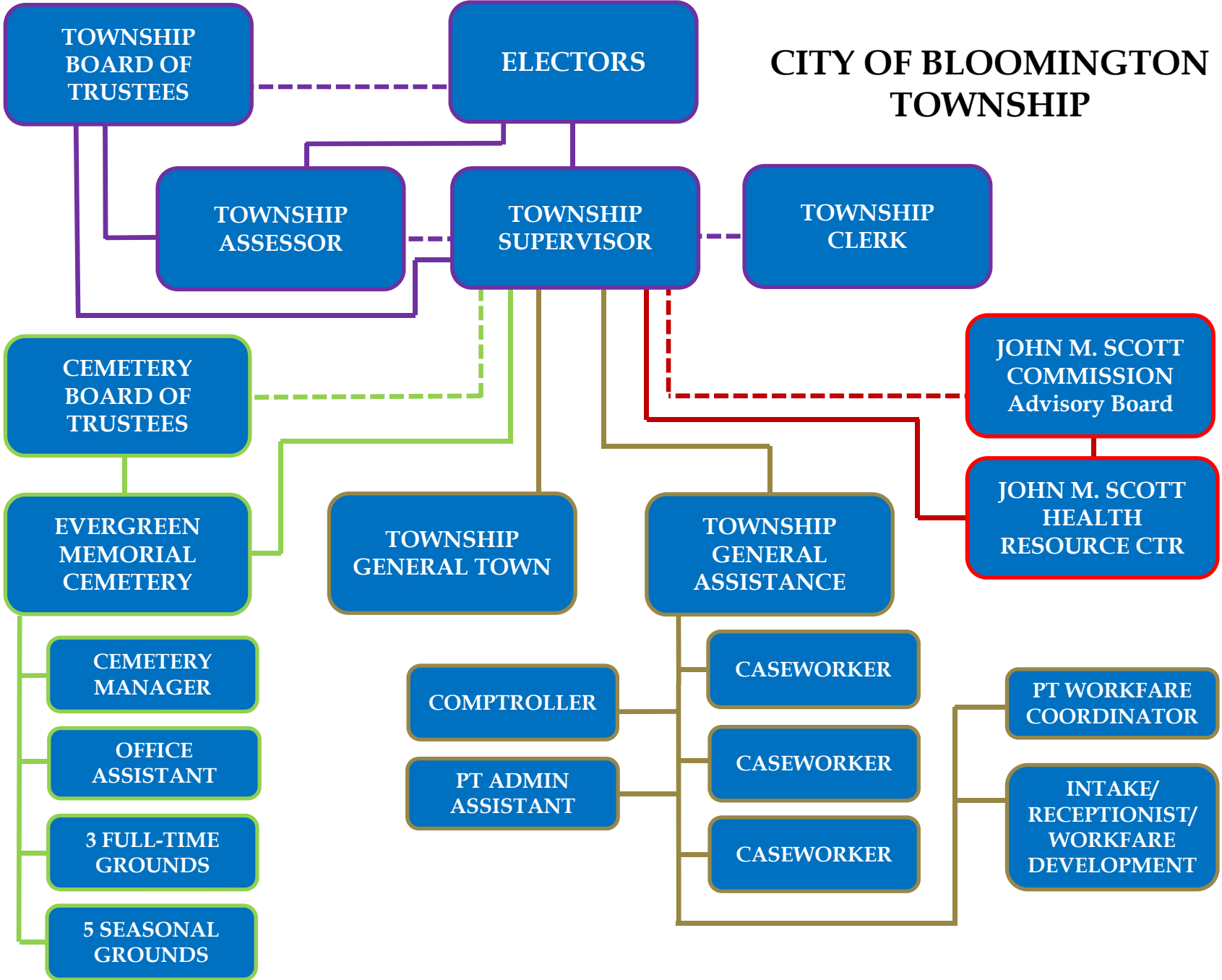
TOWNSHIP

GENERAL  
ASSISTANCE

SCOTT HEALTH

CEMETERY

# CITY OF BLOOMINGTON TOWNSHIP



**TOWNSHIP EXPENDITURES**  
**General Town , General Assistance and Cemetery**

<b>Fiscal Year</b>	<b>GT Expenses</b>	<b>GA Expenses</b>	<b>CEM Expenses</b>	<b>Total Expenses</b>
2013	\$1,323,426	\$805,004	\$607,373	\$2,735,803
2014	\$1,559,019	\$723,524	\$589,657	\$2,872,200
2015	\$1,494,793	\$542,384	\$784,278	\$2,821,455
2016	\$1,596,541	\$470,107	\$674,421	\$2,741,069
2017	\$1,674,884	\$456,233	\$665,448	\$2,796,565
2018	\$1,519,539	\$413,003	\$803,964	\$2,736,506

<b>FISCAL YEAR</b>	<b>TAX YEAR</b>	<b>LEVY REQUEST</b>	<b>COMPARISON</b>
2013	2011	\$2,231,469	-3.16%
2014	2012	\$2,156,801	-3.35%
2015	2013	\$2,156,801	-0.00%
2016	2014	\$2,251,600	4.40%
2017	2015	\$2,251,600	0.00%
2018	2016	\$2,251,600	0.00%

# General Assistance / Emergency Assistance

Provide qualified individuals basic maintenance assistance through their hardship. The focus is on education and training to promote employability and employment.

## Types of General Assistance:

- Rent
- Utilities
- Groceries
- Laundry
- Clothing
- Transportation
- Dental
- Medical Co-Pays
- Emergency Assistance

## Types of Emergency Assistance

- Evictions / Foreclosures
- Utility disconnects

## - General Assistance

### Average Cost per Recipient

Year	Total Number of Recipients	Cost per Recipient
2013	2101	\$383
2014	1919	\$377
2015	1976	\$269
2016	1774	\$265
2017	1623	\$263
2018	1412	\$264

**The maximum monthly grant per client is \$265. Cost per client reflects total GA, EA and Transient expenses.**

## - General Assistance

### SSI Recoupment

<b>Fiscal Year</b>	<b>Number of Clients Pending SSI</b>	<b>Number of Clients Awarded SSI</b>	<b>SSI Recovery</b>
2013	644	31	\$53,134
2014	686	33	\$77,579
2015	702	26	\$56,768
2016	241	21	\$42,942
2017	328	14	\$41,278
2018	268	26	\$65,084



## FISCAL YEAR STATISTICAL COMPARISONS

Individuals Served	FY2018	FY2017	FY2016
GA New Clients	185	213	190
GA Redetermination	1088	1259	1407
EA	108	113	80
Transient	15	10	6
Burial	0	0	1
Phone Calls	4803	4573	4245
Walk-Ins	5085	4003	3178
Orientations	851	829	878
Age			
<18	0.2%	0.4%	0.2%
18-25	15.9%	16.7%	12.0%
26-40	40.7%	39.0%	41.0%
41-50	18.5%	24.5%	21.9%
51-62	24.5%	19.4%	24.4%
>62	0.2%	0.0%	0.5%

## **- General Assistance**

**Focus on education and training to promote employability and employment.**

### **WORKFARE SPONSORS**

**Bloomington Housing Authority**

**Boys & Girls Club**

**Centennial Christian Church**

**Center for Hope**

**Evergreen Memorial Cemetery**

**Habitat for Humanity Office**

**Habitat for Humanity Restore**

**Home Sweet Home Office**

**Home Sweet Home Mission Mart**

**Home Sweet Home Warehouse**

**Homes of Hope**

**Miller Park Zoo**

**Mt. Pisgah Church**

**Recycling Furniture for Families**

**Salvation Army - Safe Harbor**

**Western Avenue**

**YMCA**                    *and more!*

The City of Bloomington Township continues with an Intergovernmental Agreement with the Normal Township to manage Normal Township recipients of General Assistance for their Community Work Program.

# - General Assistance

## FY 2018 EMPLOYMENT SUCCESSES

**Bob Evans  
Fresh Thyme Market  
Peoria Charter Coach  
Holiday Inn Express  
Casey's Garden Shop  
Owen's Nursery  
Schooners  
Wal-Mart  
McDonalds  
Maguire's  
Eurest  
Midwest Fiber  
Internal Revenue Service**

**Tobin's Pizza  
O'Brien Motors  
Beer Nuts  
4M Building Solutions  
Cracker Barrel  
Heritage Manor  
Olive Garden  
Prairie Central Coop  
Slim Chicken  
Dollar General  
People Ready  
Vonachens  
Let's Party Rental**

**Mechanical Devices  
F&W Landscaping  
People Link  
AFNI  
Bank of America  
Town Place  
YWCA  
Illini Cloud  
Mongolian Grill  
Illinois State University  
Harbor Freight  
Steak N Shake  
Dept. of Human Services**

MONARCH BUTTERFLY GARDEN  
MEMORIAL TO MAXINE SCHULTZ



## ➤ Evergreen Memorial Cemetery

**CEMETERY BOARD  
OF TRUSTEES**

Gene Lorch, President  
Gregory Fraley, Vice-President  
Joe Gibson, Secretary/Treasurer

**CEMETERY  
MANAGER**

Tina Crow

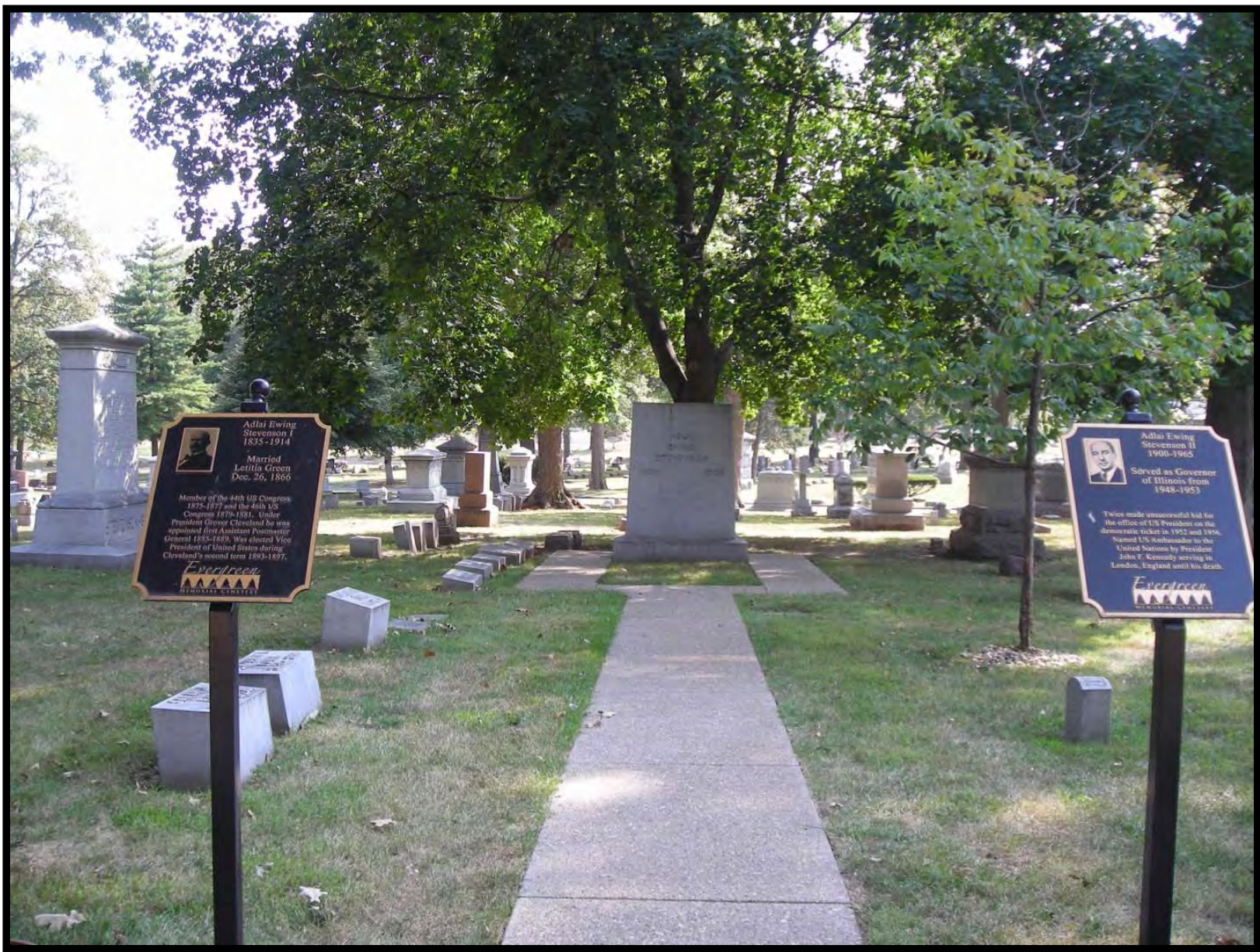
**CEMETERY  
ADMINISTRATIVE  
ASSISTANT**

Gaye Nichols

Annual Events: Spring - Memorial Day Event  
Fall - Discovery Walk

# AVENUE OF FLAGS





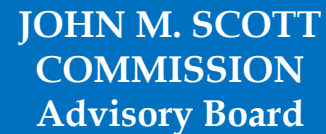
  
Adlai Ewing  
Stevenson I  
1835-1914  
Married  
Lettitia Green  
Dec. 26, 1866  
Member of the 44th US Congress  
1875-1877 and the 46th US  
Congress 1879-1881. Under  
President Grover Cleveland he was  
appointed first Assistant Postmaster  
General 1885-1889. Was elected Vice  
President of United States during  
Cleveland's second term 1893-1897.  
**Evergreen**  
REMOVIST CEMETERY

  
Adlai Ewing  
Stevenson II  
1900-1965  
Served as Governor  
of Illinois from  
1948-1953  
Twice made unsuccessful bid for  
the office of US President on the  
Democratic ticket in 1952 and 1956.  
Named US Ambassador to the  
United Nations by President  
John F. Kennedy serving in  
London, England until his death.  
**Evergreen**  
REMOVIST CEMETERY





# - John M. Scott Health Resource Center



JOHN M. SCOTT  
COMMISSION  
Advisory Board

John Couillard, OD  
Brandi Sweeney  
David Wyse, DMD  
Susan Albee, RN  
James Swanson, MD  
Donna Hartweg, PhD, RN  
Deb Skillrud

Bloomington Regional Optometric Society  
Advocate BroMenn Health Care  
McLean County Dental Society  
McLean County Board of Health  
Second Presbyterian Church  
Ninth District Nurses Association  
Township Supervisor

In 2009, the City of Bloomington Township entered into an Intergovernmental Agreement with the City of Bloomington to manage the operations of the John M. Scott Trust.

## ➤ John M. Scott Health Resource Center

Purpose of the Trust is to provide selected Health Care Services for qualified indigent persons residing in McLean County. Trust has been set up as a unique and flexible charitable program to accommodate those who fall through the cracks of existing health services.

- Prescription Medication Program
- Medical Office Visits
- Dental Health Services
- Medical Equipment and Supplies
- Mental Health Medication
- Transportation
- Gary S. Johnson Dental Clinic

THIS SERVICE DOES NOT DUPLICATE OR REPLACE SERVICES AVAILABLE THROUGH OTHER AGENCIES OR PAYMENT SOURCES.

## ➤ John M. Scott Health Resource Center

Stats for FY 2018 of March 31st:

539 - FY2018 Total Trips to Adult medical for treatment

448 - FY2017 Total Trips to Cancer Center for treatment

235 - FY2018 Total Trips for Maternal/Child to Medical appointments

202 - FY2017 Total Trips for Maternal/Child to Medical appointments

60 - FY2018 Total Health Referral Orders for private dental

81 - FY2017 Total Health Referral Orders for private dental

122 - FY2018 Total # of dental procedures to private dentists

178 - FY2017 Total # of dental procedures to private dentists

# HIGHLIGHTS FOR FY 2019

- PT Workforce Development Coordinator position established to enhance collaboration and development of programs and education classes.
- Monarch Butterfly Memorial Garden dedicated to Maxine E Schultz at Township Day Event.
- US Army Ranger Joshua P. Rogers laid to rest in April in the new Veteran Field. Dedication ceremony was held in August.
- Summit of Hope - IL Department of Corrections - Expo participant.6
- Local Employer Assistance Partnership (LEAP) team partner provides employment events and workshops.

# GOALS FOR FY 2019

- Completion of Ossuary at Evergreen Memorial Cemetery – Underground storage container where cremated remains are comingled.
- EMC Pet Extravaganza, vendors & Wishbone, May 12.
- Work with the City of Bloomington PACE department for assessment of Township building and maintenance.
- Evaluate how potential Federal & State changes of American Healthcare Act will affect Township and Scott Health in the future.
- Re-establish a location and partnership with EAC Pots Recycling as a workfare site.
- Continue to develop a comprehensive workfare educational development program.

Deb Skillrud  
[dskillrud@cityblm.org](mailto:dskillrud@cityblm.org)  
(309)828-2356